

Contents

Overview

[What is RunComp](#)

Operation

[Running RunComp](#)

What is RunComp

Microsoft's COMPRESS.EXE is a DOS only program. RunComp is a Windows front end for COMPRESS.EXE.

RunComp allows you to create a list of files from various directories and then have COMPRESS.EXE compress them. You can compress the files in their own directories or have them all directed to a single output directory.

RunComp is part of Soft Ventures' developer's installation utility SVInstal. A shareware evaluation copy of SVInstal can be downloaded from CIS, DBA forum, as SVINST.ZIP.

Rob Stevens

Soft Ventures

Box 22183 Bankers Hall

Calgary Alberta Canada

T2P 4J5

CIS 71441,734

Internet 71441.734@compuserve.com

Running RunComp

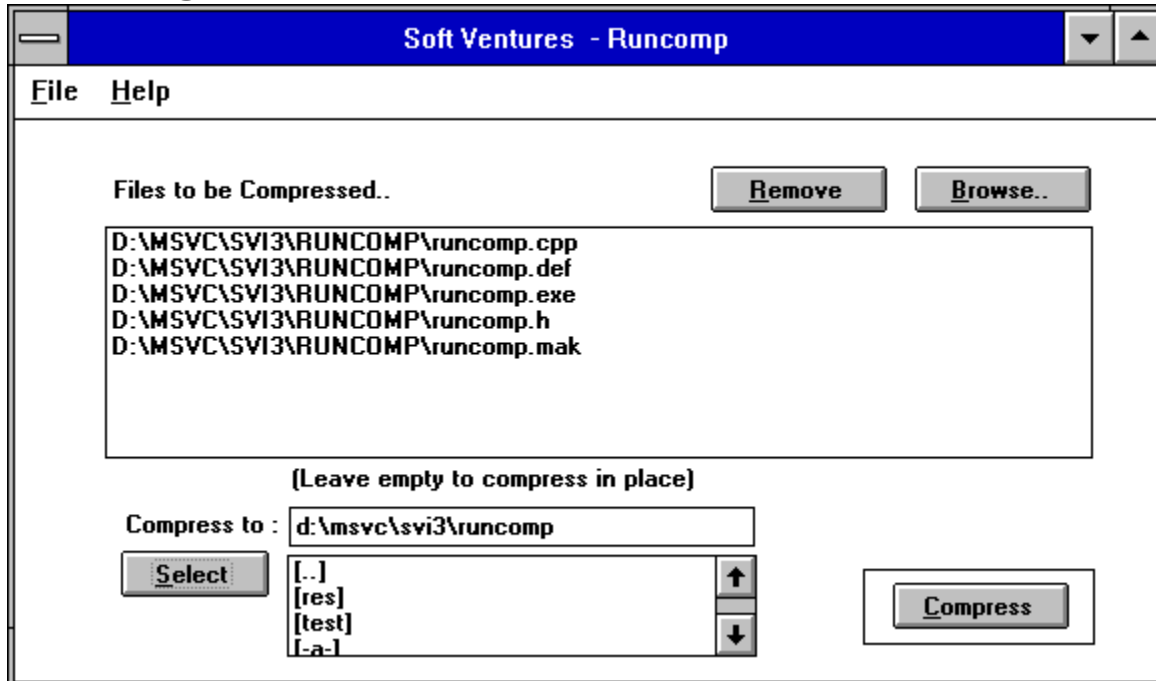


Fig 1.

The object of the game here is to make a list of the file you wish to have compressed. Then click on 'Compress' and RunComp will batch up a COMPRESS.EXE run to do the work.

Related Topics:

- [Browse](#)
- [Remove](#)
- [Select](#)
- [Compress](#)

Browse

The Browse button opens a standard file selection dialog box. The Browse dialog is a multi-selection listbox which allows you to select one or many files from a directory. The selected files are placed into RunComp's list of files to be compressed. The browse feature can be used again to select files from a different directory.

Remove

If you accidentally get files into the list that you do **not** want compressed, select them then click on 'remove' to zap them out of the list.

Select

RunComp allows you to compress files in their directories OR compress them all to a single output directory. If you leave the output directory box empty, the files will be compressed in their current directories. Click on 'Select' if you wish to choose an output directory. The directory must already exist.

Compress

The 'Compress' button initiates the actual compression run. Because COMPRESS.EXE does not support a file list as a source argument, Runcomp builds a batch file that calls compress. A DOS window will display the progress of the compression run.

